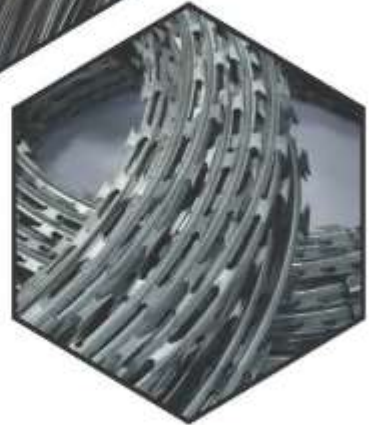
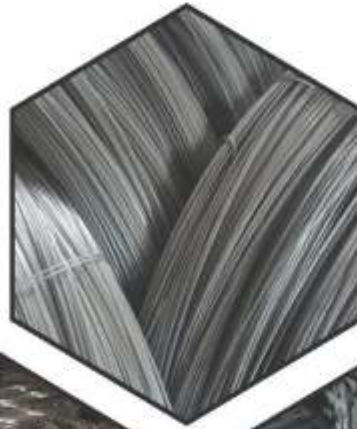




مصنع السياج الذهبي لتشكيل ومعالجة المعادن  
**GOLDEN FENCE MECHANICAL FACTORY**





مصنع السياج الذهبي لتشكيل ومعالجة المعادن

**GOLDEN FENCE MECHANICAL FACTORY**

COMPLETE SOLUTION FOR MECHANICAL & FENCE WORKS

## Introduction

**Golden Fence** is a manufacturer of high quality steel fencing with core competency in customized fencing solutions. **Golden Fence** constantly strives to research, develop and introduce products and solutions to meet new challenges in the area of security. We have taken the 'Lean and Sleek' philosophy from manufacturing to product development without compromising on the system strength.

**Golden Fence** is an ISO 9001:2015 certified company manufactures and supplies perimeter fencing made out of steel. That defines our core competency.

**Golden Fence** has developed itself into a one-stop shop for all fencing requirements. We manufacture starting from the fabric of the fence – whether it is chain link or welded mesh, to the posts required to support the fabric, to last nut and bolt required installing a fence system. We offer solutions for a wide variety of applications, whether it is political borders, oil and gas pipelines, prisons, corporate buildings, residential complexes, gardens, swimming pools, industrial zones, motorways, stadiums, school etc.

We are pleased to present some details about some of our products which include but not limited to the followings:

Fence ARAMCO Types I, II, III, IV, & V, SSD I, II, III & IV and HCIS I, II, III & IV. GATES; bolted and welded construction, folded type big gate for wellheads, sliding gates manually operated and electrically operated with atomization, complete Fence Accessories. Our machines have capacity of 120 rolls a day of Black, Hot Dip Galvanized and PVC Coated Chain Link Fence and Barbed Wires respectively.

**Golden Fence** manufactures as per customer specifications and our products comply with 'International Standards' such as 'ASTM (American Society for Testing and Materials)' and 'BS (British Standards)'.



مصنع السياج الذهبي لتشكيل ومعالجة المعادن

**GOLDEN FENCE MECHANICAL FACTORY**

COMPLETE SOLUTION FOR MECHANICAL & FENCE WORKS

## Vision, Mission & Commitment's

### Our Vision

Our vision is to become one of the leading companies in the manufacturing of Chain Link Fence and Allied Accessories throughout the region, providing the most reliable, safe and value added products to our customers.

### Our Mission

We will achieve our vision by:

- Pursuing innovation as the path to delivering superior Fencing solution to our customers; and there by attaining customer delight.
- Ensuring the satisfaction of our shareholders, partners and employees by supporting them to achieve their goals.
- Continually striving to enhance our performance by employing high quality control and implementation systems; and adopting advance safety and optimization practices.
- Maintaining the highest level of integrality in all our dealings; and contributing responsibility to the environment, the community and the nation.

### Our Commitment

It's about actions not just words, words are easy; it's living up to them that can be hard. It's often when the challenge is greatest that our promise has real Meaning, showing the true value from enduring relationships.





مصنع السياج الذهبي لتشكيل ومعالجة المعادن

**GOLDEN FENCE MECHANICAL FACTORY**

COMPLETE SOLUTION FOR MECHANICAL & FENCE WORKS

## Our Fence Materials



**GALVANIZED WIRE MESH**



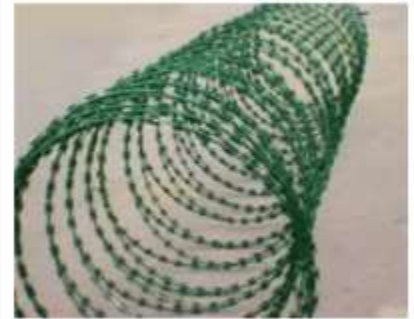
**PVC COATED WIRE MESH**



**BARBED WIRE GALV**



**BARBED WIRE PVC**



**CONCERTINA RAZOR WIRE**

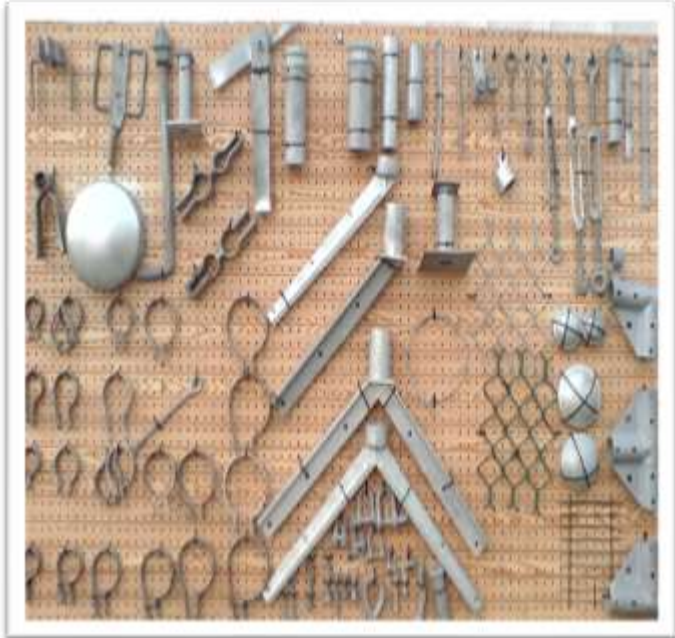


مصنع السياج الذهبي لتشكيل ومعالجة المعادن

**GOLDEN FENCE MECHANICAL FACTORY**

COMPLETE SOLUTION FOR MECHANICAL & FENCE WORKS

### All Fence Accessories



### All Types of Pipes



**GALVANIZED PIPES**



**PVC COATED PIPES**





## All Types of Fence Gates



Double Leaf Gate



Single Leaf Gate



Sliding Gate

## All Types of Fence





مصنع السياج الذهبي لتشكيل ومعالجة المعادن

**GOLDEN FENCE MECHANICAL FACTORY**

COMPLETE SOLUTION FOR MECHANICAL & FENCE WORKS

## Our Major Equipment's



Chain Link Fence Machines



PVC Coating Machines



Lathe Machines



Shearing Machines



Rolling Machines



Drill Machines



Barbed Wire Machines

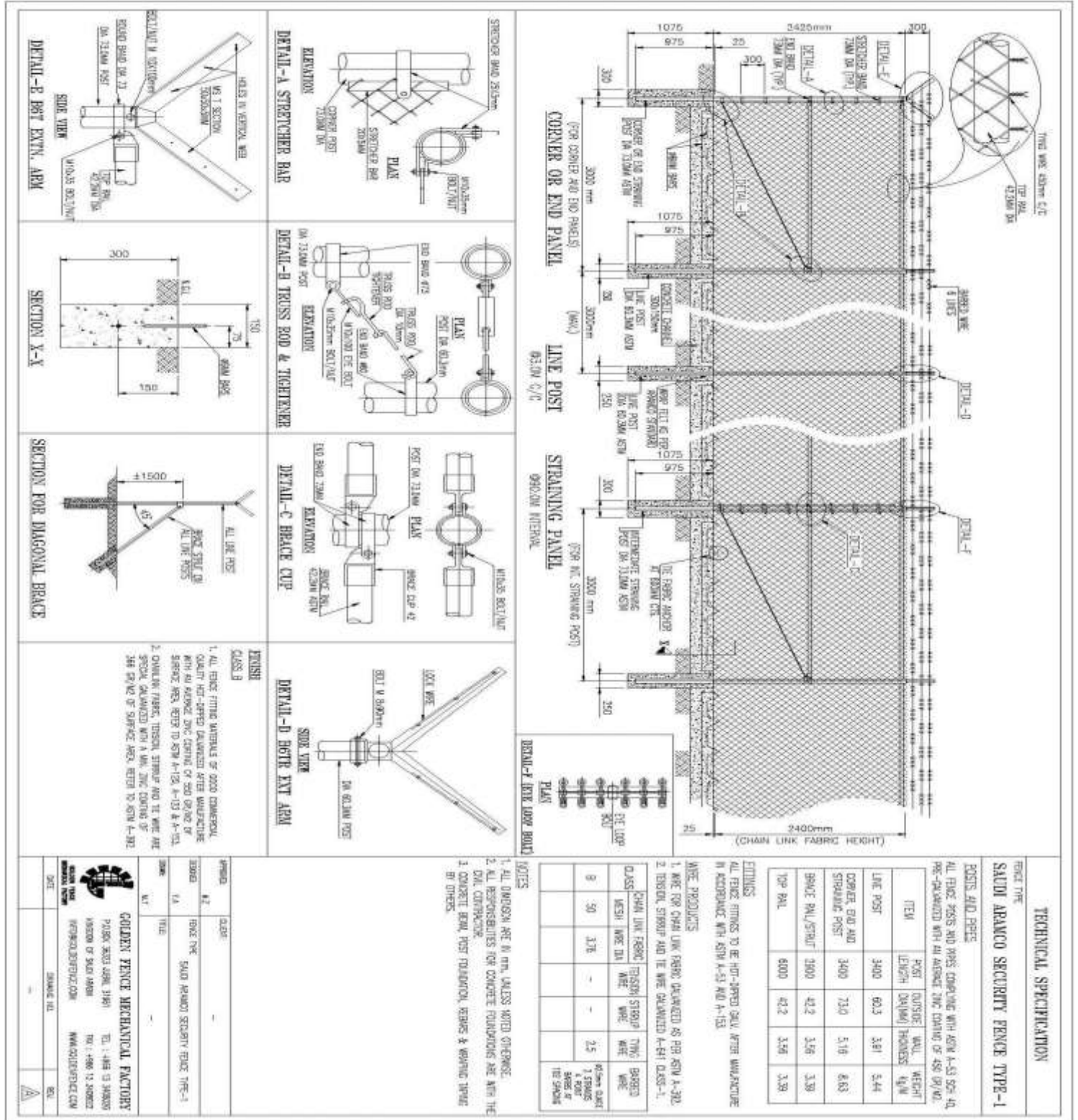


Press Machines





## Design & Drawing – Saudi Aramco Type – I Fence





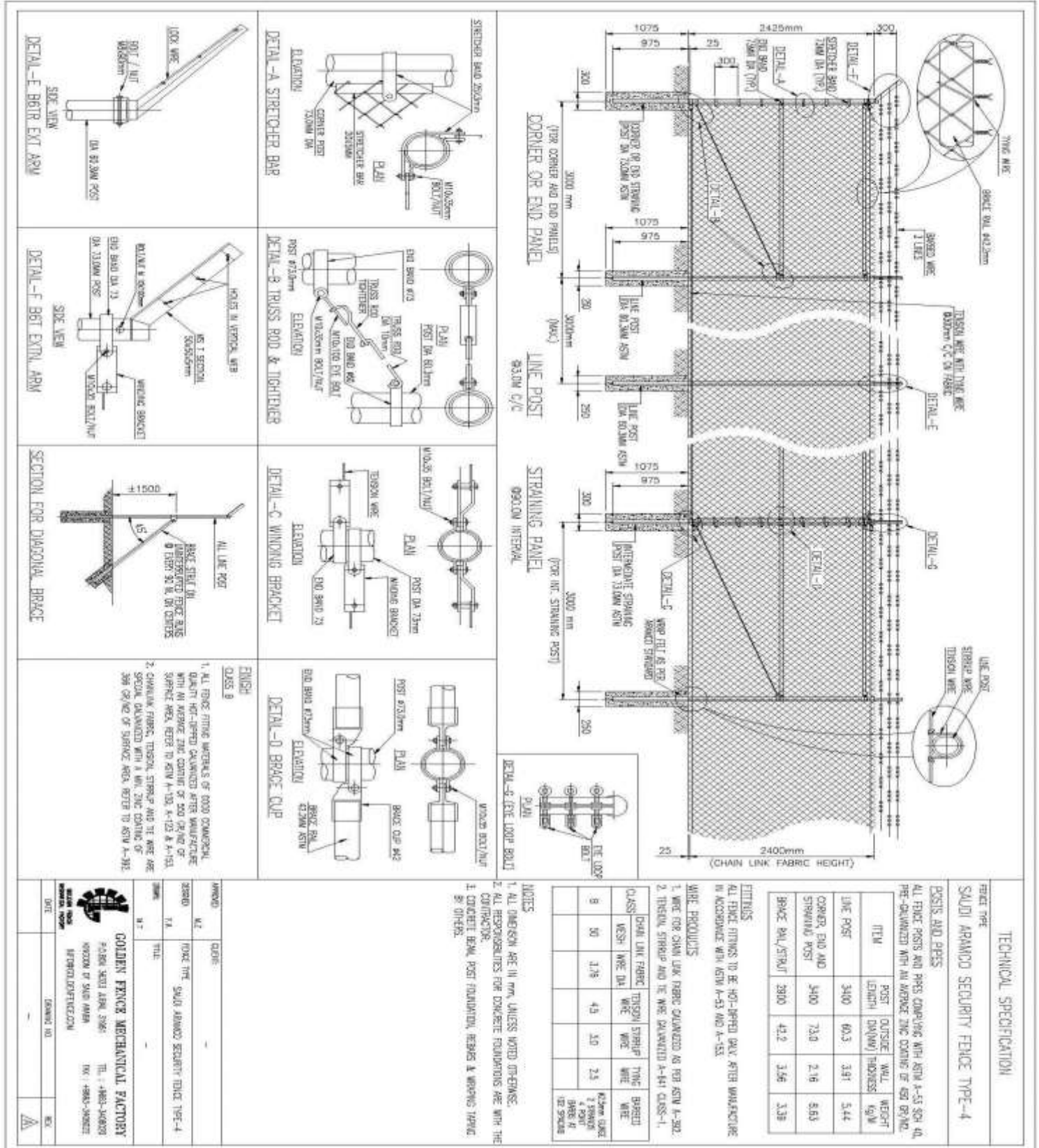






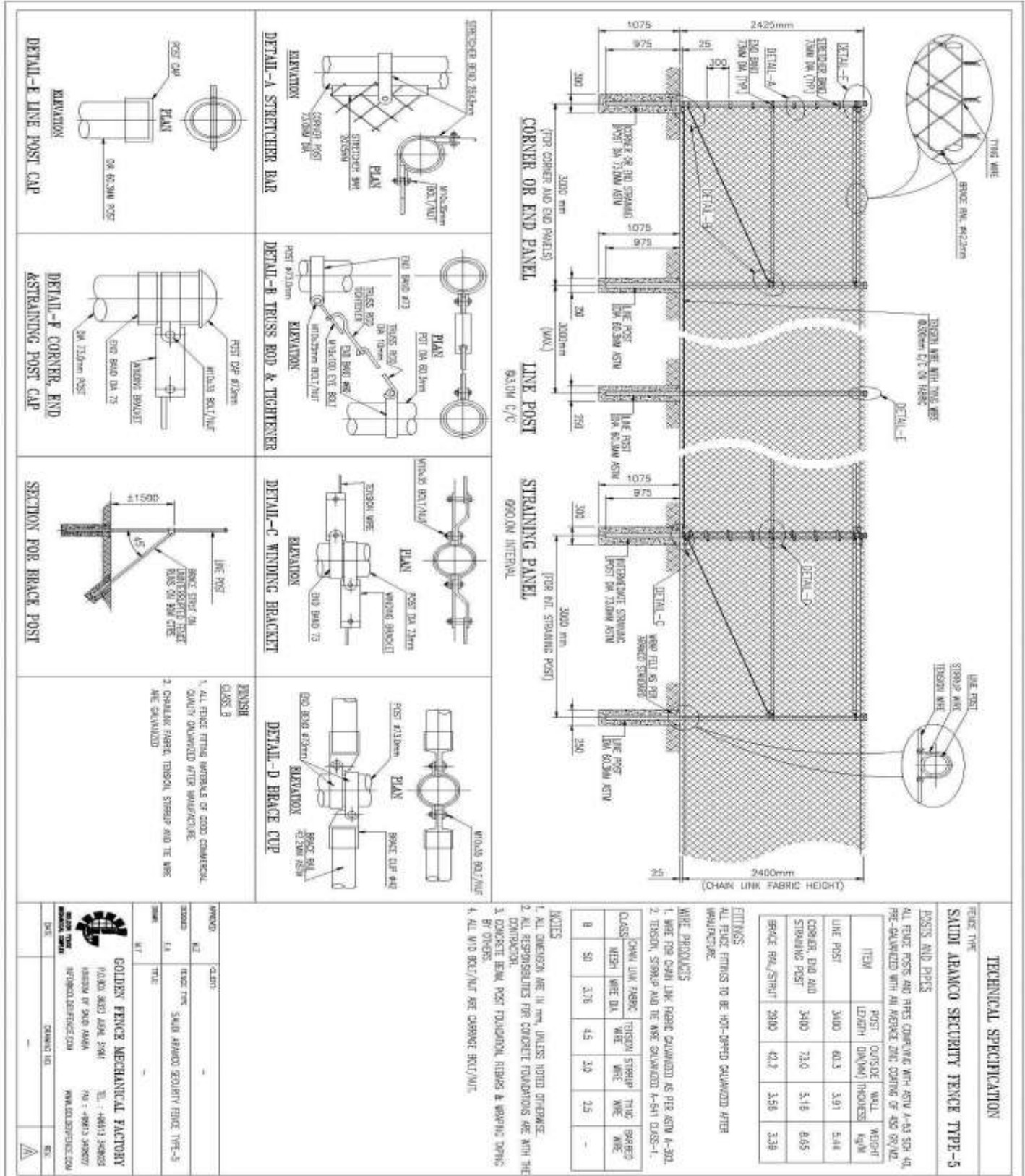


## Design & Drawing – Saudi Aramco Type 4 Fence





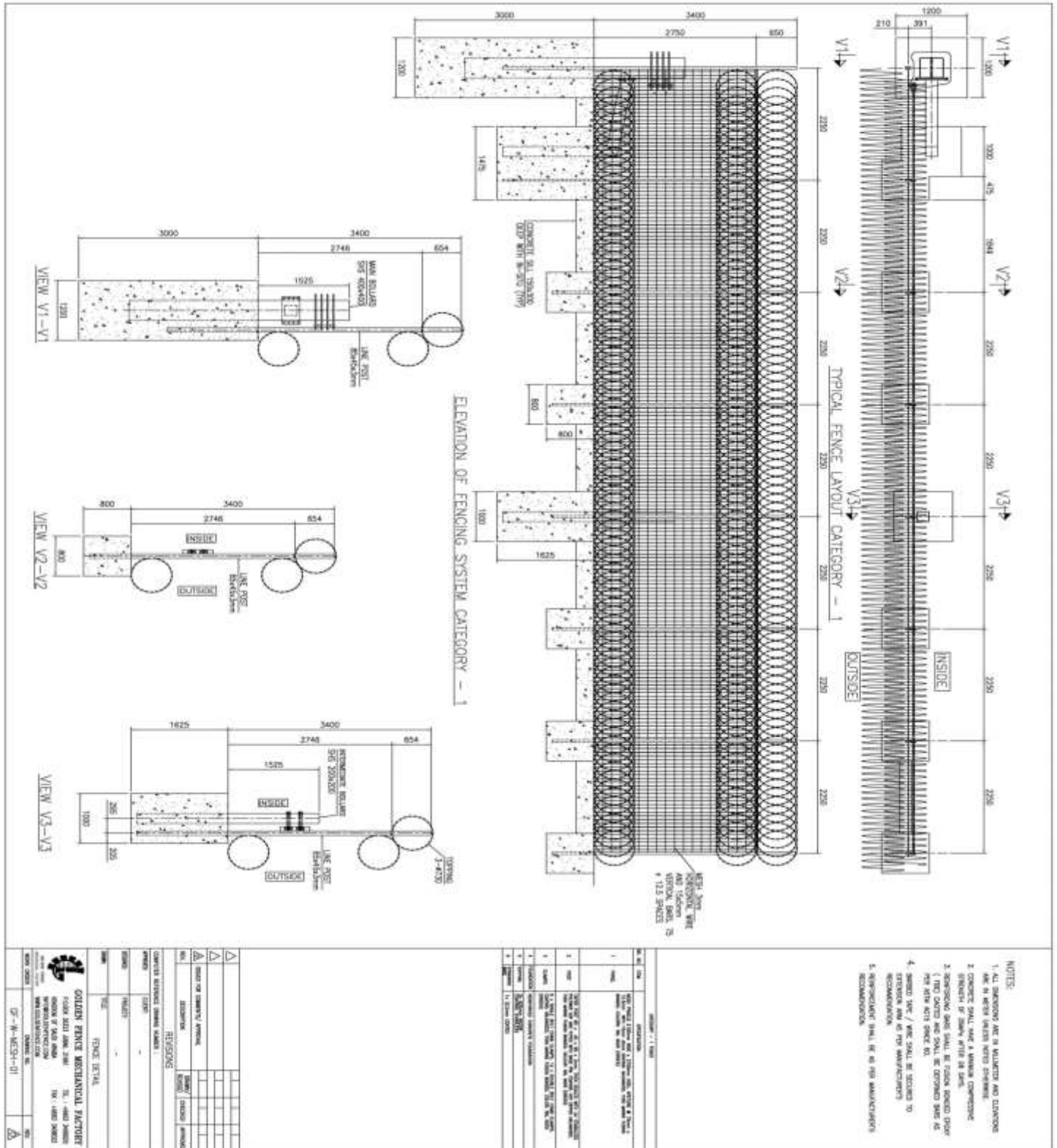
## Design & Drawing – Saudi Aramco Type 5 Fence





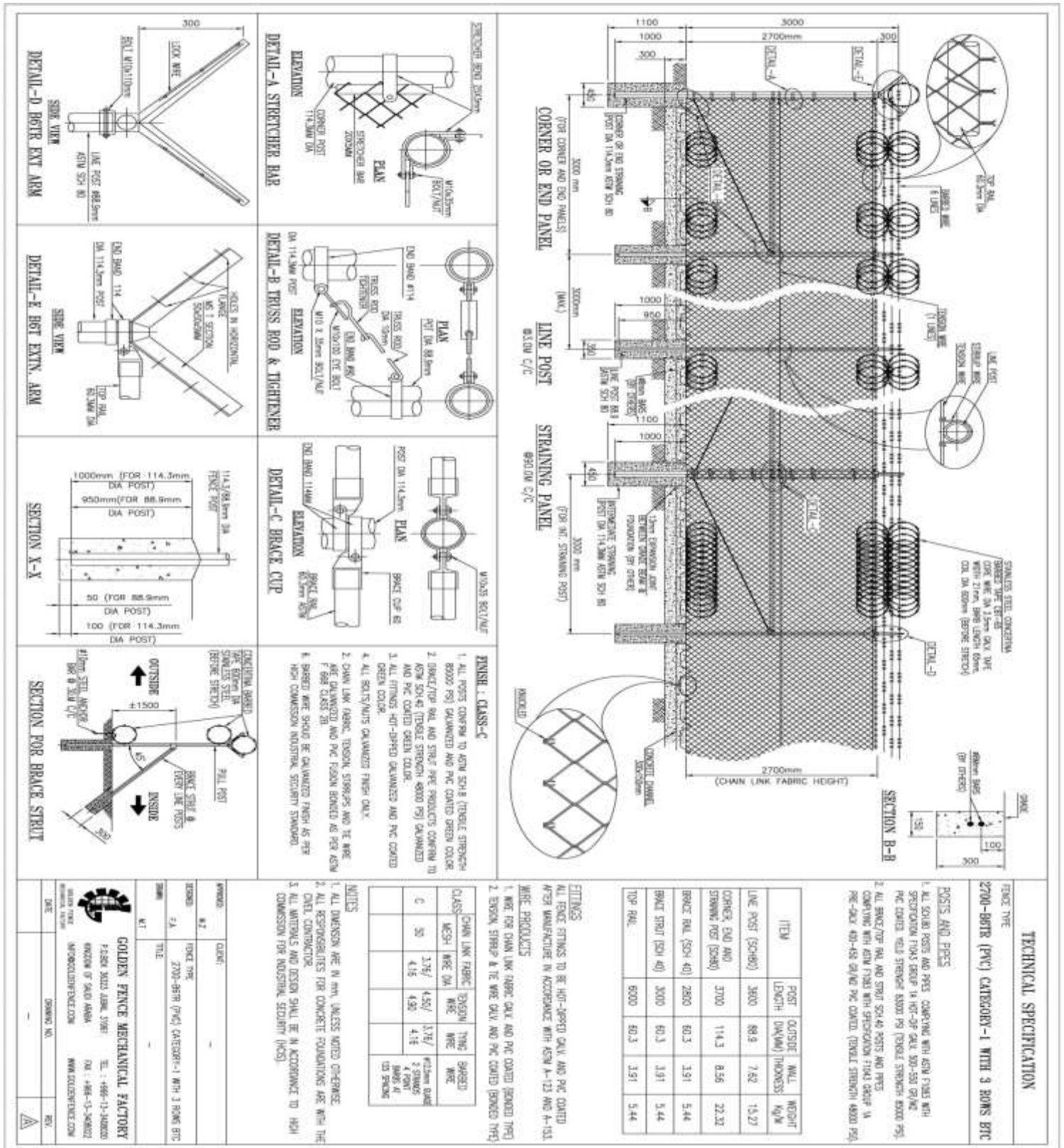


## Design & Drawing – RIGID WELDED MESH HCIS CAT I - 2017





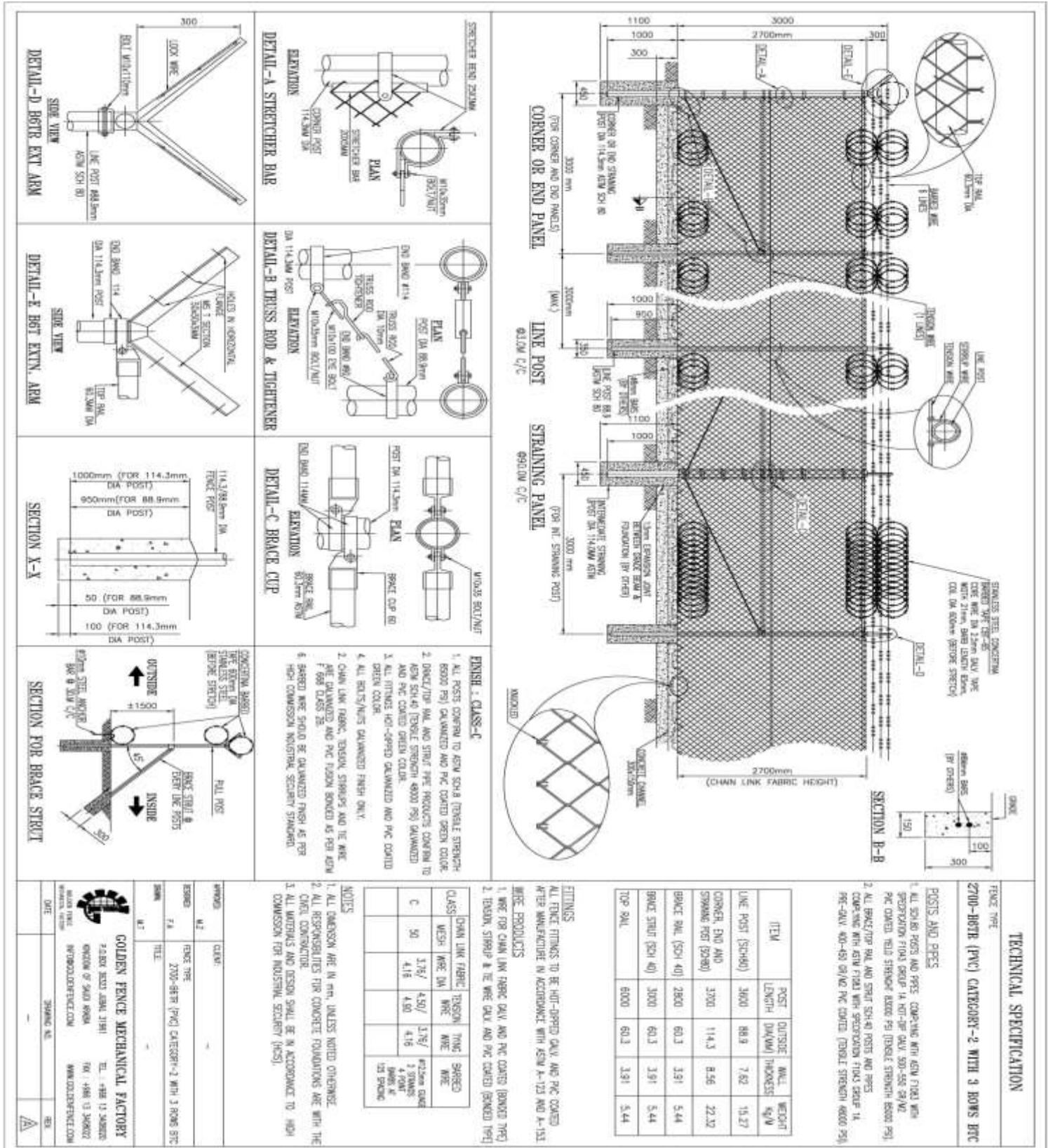
## Design & Drawing – HCIS CAT I Fence







## Design & Drawing – HCIS CAT II Fence



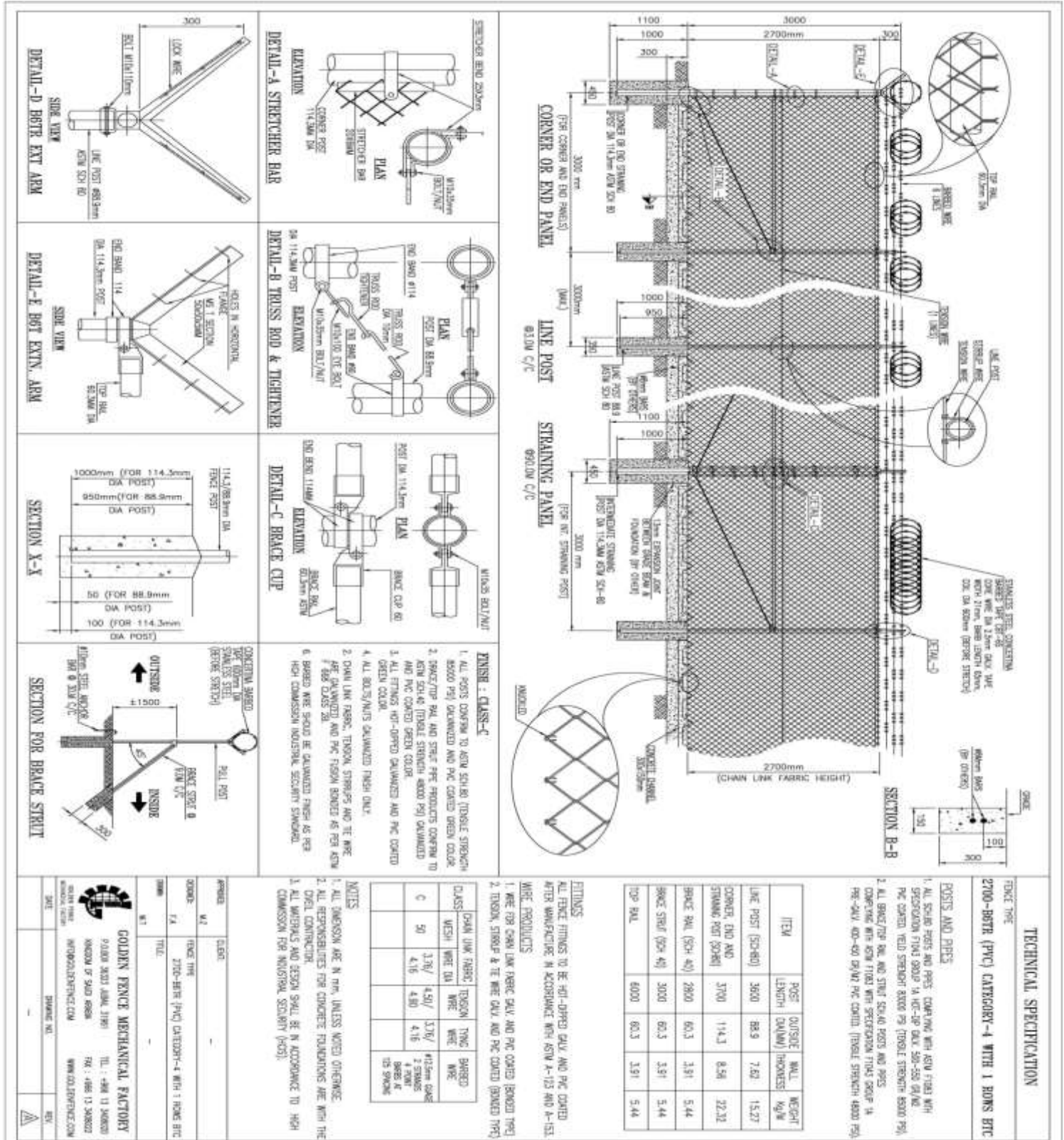


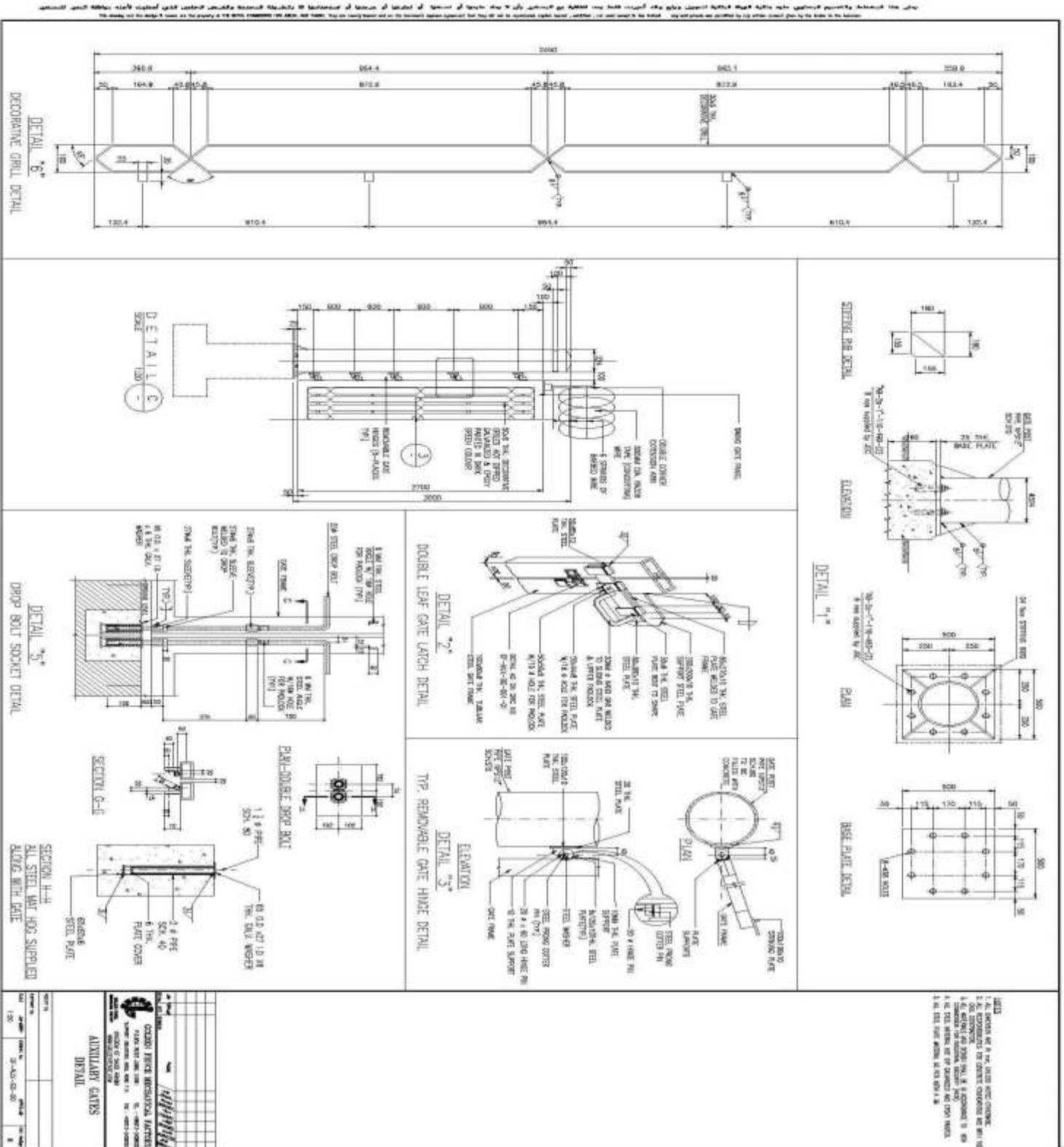






## Design & Drawing – HCIS CAT IV Fence









The technical drawings illustrate the Double Leaf Swing Gate and Single Leaf Swing Gate systems. The Double Leaf Swing Gate section includes a plan view showing the gate's width (960-1200) and height, and an elevation view showing the gate's profile and components like the gate frame, gate post, and gate hinge. The Single Leaf Swing Gate section includes a plan view showing the gate's width (960-1200) and height, and an elevation view showing the gate's profile and components like the gate frame, gate post, and gate hinge. The drawings also include details of the gate hinge and the gate post.

**DOUBLE LEAF SWING GATE (VIEW FROM OUTSIDE)**

**SINGLE LEAF SWING GATE (VIEW FROM OUTSIDE)**

**DETAIL - H (HINGE)**

**LOCKING SYSTEM (BOTH SIDE LOOKING)**

**LEGEND**

1. ALL DIMENSIONS ARE IN MM, UNLESS NOTED OTHERWISE.
2. ALL DIMENSIONS ARE TO CENTER UNLESS NOTED OTHERWISE.
3. ALL DIMENSIONS ARE TO CENTER UNLESS NOTED OTHERWISE.
4. ALL DIMENSIONS ARE TO CENTER UNLESS NOTED OTHERWISE.
5. ALL DIMENSIONS ARE TO CENTER UNLESS NOTED OTHERWISE.
6. ALL DIMENSIONS ARE TO CENTER UNLESS NOTED OTHERWISE.
7. ALL DIMENSIONS ARE TO CENTER UNLESS NOTED OTHERWISE.
8. ALL DIMENSIONS ARE TO CENTER UNLESS NOTED OTHERWISE.
9. ALL DIMENSIONS ARE TO CENTER UNLESS NOTED OTHERWISE.
10. ALL DIMENSIONS ARE TO CENTER UNLESS NOTED OTHERWISE.

**COMPANY INFORMATION**

**DAVID'S FENCE WORKS**

**7100 S. 10th Ave. Suite 100**

**Phoenix, AZ 85042**

**TEL: (602) 998-0000**

**FAX: (602) 998-0001**

**WWW.DAVIDSFENCE.COM**

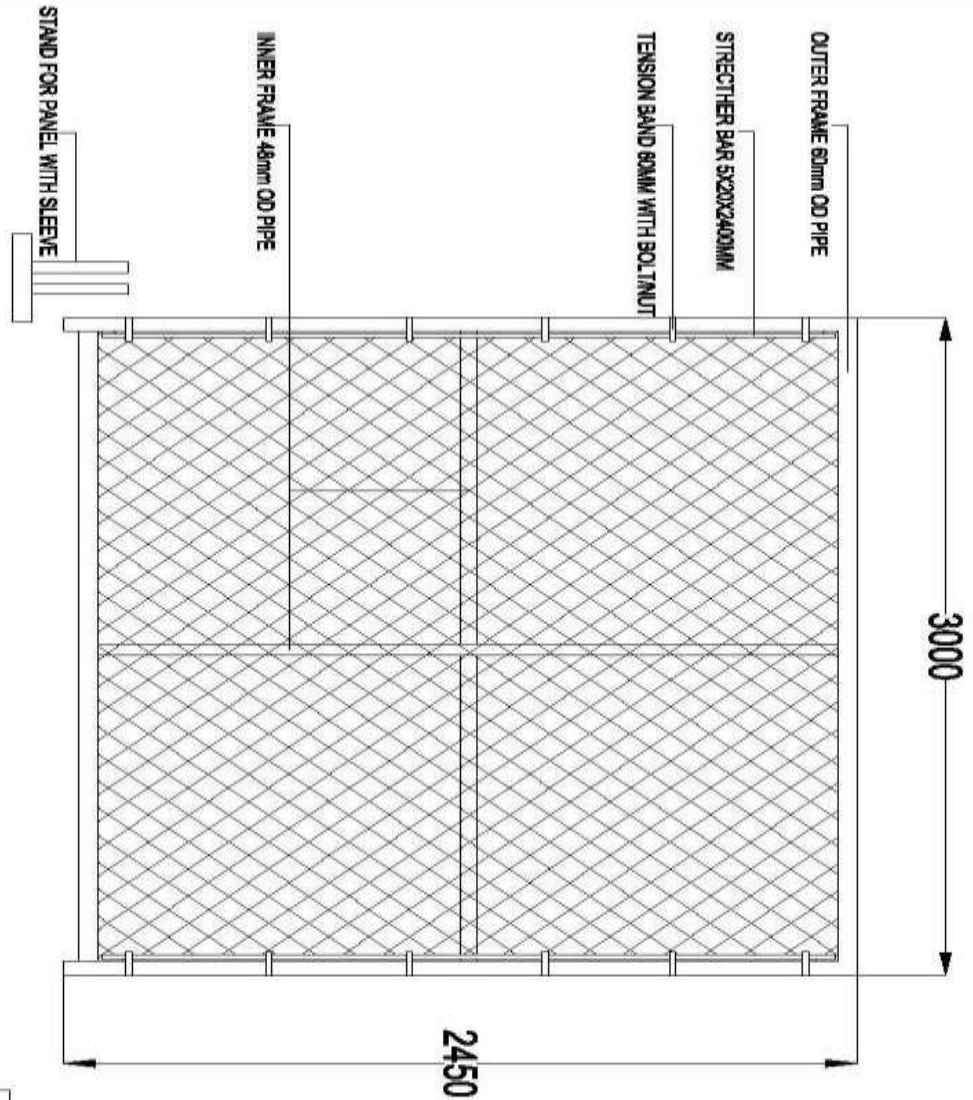
**© 2010 DAVID'S FENCE WORKS**

[illegible]





## Design & Drawing - Temporary Fence Panel



Note:  
 Available in option of welded mesh with square opening.  
 More lighter frame available of 42mm OD pipe also.  
 All steel material carbon steel A36/Equivalent.  
 Material finish Galvanized / Powder

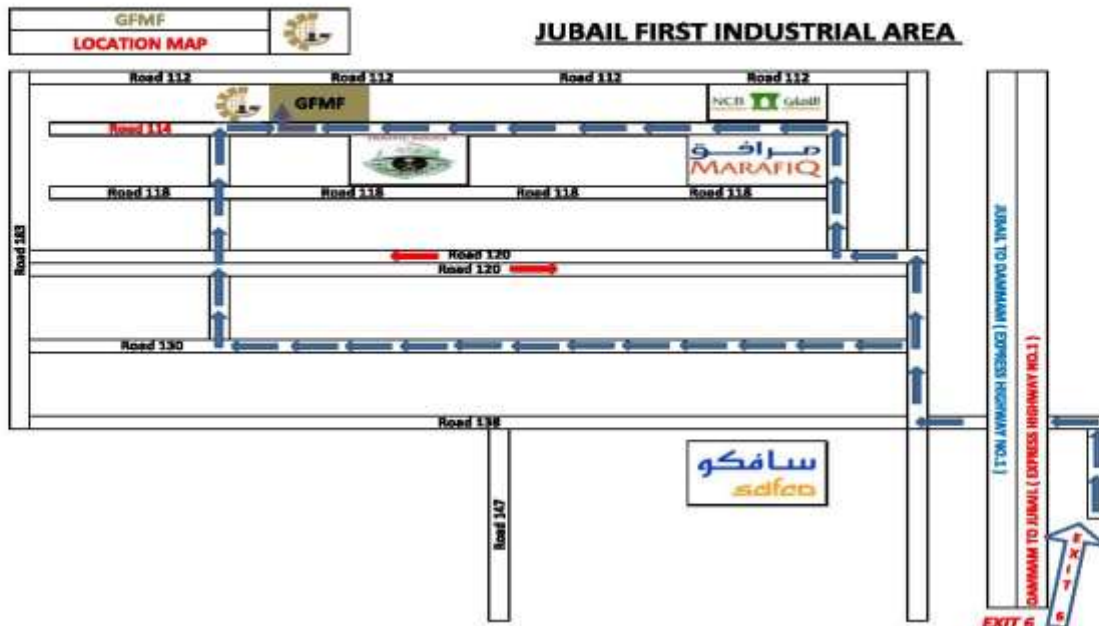
TEMPORARY REMOVABLE FENCE PANELS

APPROVED:	CLIENT:
DESIGNED: F.A.	TITLE: TEMPORARY REMOVABLE FENCE PANELS
DRAWN: M.U.	
<b>GOLDEN FENCE MECHANICAL FACTORY</b> P.O. BOX 3625 JORDAN 21081 KINGDOM OF JORDAN TEL: +962 12 506000 FAX: +962 12 506002 INFO@GOLDENFENCE.COM WWW.GOLDENFENCE.COM	
DATE	DRAWING NO.
	REV.

## GOLDEN FENCE MECHANICAL FACTORY

COMPLETE SOLUTION FOR MECHANICAL & FENCE WORKS

## GOLDEN FENCE GROUP OF COMPANIES



**KISWA**

**GENERAL TRADING W.L.L**

RIFFA / ALHAJIYAT BLOCK 939  
ROAD 3953 BUILDING NO 2667  
FLAT / SHOP 22 (BAHRAIN)  
info@kiswa2.co  
www.kiswa2.co



**TIANJIN**

**GOLDEN FENCE IND.CO**

#2 BUILDING MINGHAI CENTER  
NO. 200 XICHANG ROAD TIANJIN  
FREE TRADE ZONE (CHINA)  
info@goldenfence.com  
www.goldenfence.com



**KISWA**

**MECHANICAL COMPLEX**

MALIK HOSPITAL RASHEED  
PURA SHALAMAR TOWN  
LAHORE (PAKISTAN)  
info@kiswa2.co  
www.kiswa2.co

**GOLDEN FENCE MECHANICAL FACTORY  
(HEAD OFFICE)**

PO. BOX 36323, JUBAIL 31961 SUPPORT INDUSTRIAL AREA, ROAD 114  
Tel: +966 13 340 8020 KINGDOM OF SAUDI ARABIA Fax: +966 13 340 8022  
info@goldenfence.com www.goldenfence.com